



4 OPTIONAL – MLNB



LED
Number
Board
Qty 1



1 MLSP-50-20

50W Medium LED
Qty 6

2x Front Facing (One on each top side of radiator grill)
2x Front Facing (One each side of front bumper bar)
2x Rear Facing/Reverse Light (one either side of access area)



2 MLSP-50-40

50W Wide LED
Qty 8

2x Front Facing (One on each corner of radiator grill)
2x Front Facing (One on each side of front bumper bar)
2x Forward/Side Facing (Either side of access area)
2x Lower Rear Facing (Facing diagonally under rear of tray)



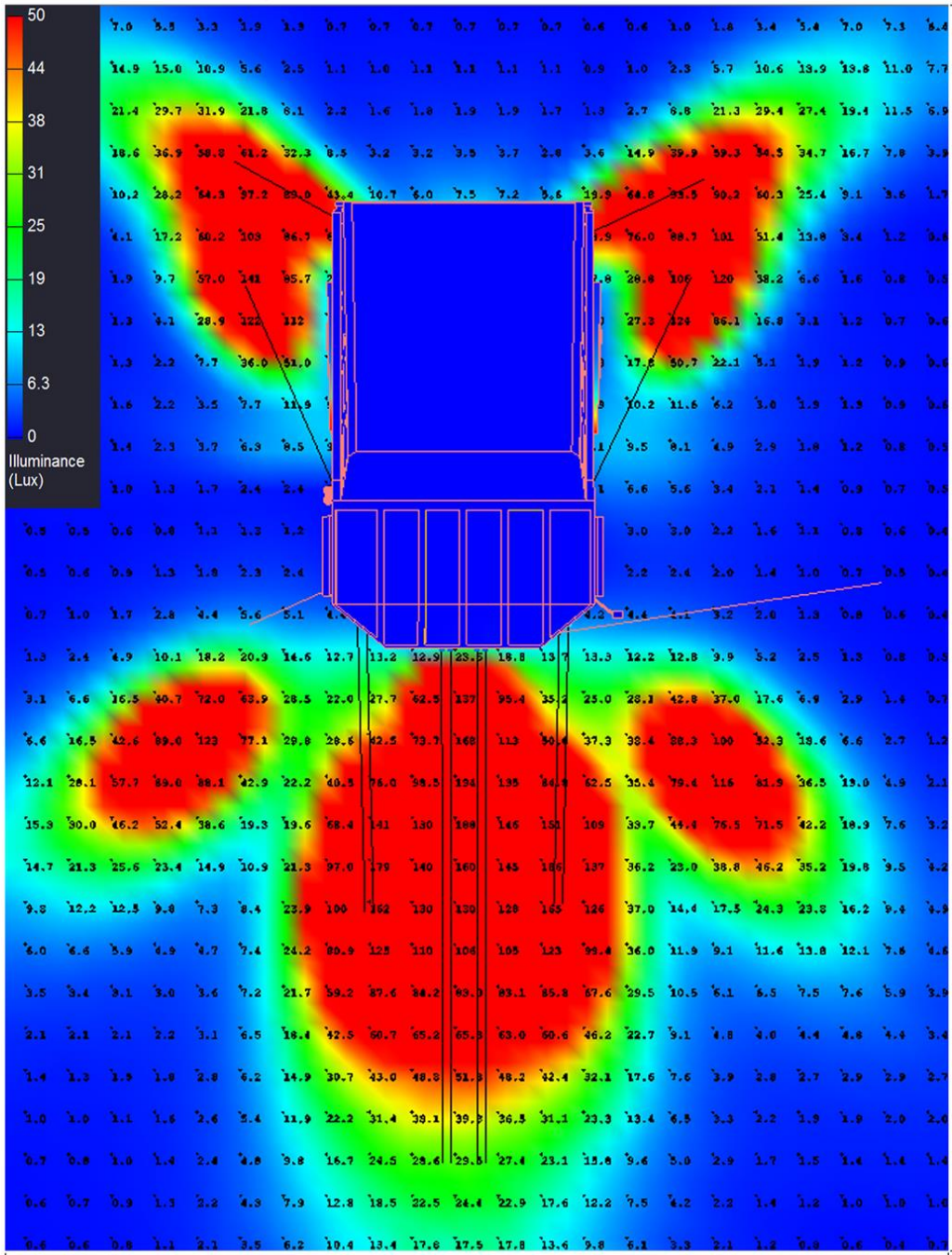
3 MLSP-10-40

10W Wide LED
Qty 7

1x Rear Outer Corner of Operator's Cabin (Facing cabin door area)
2x Top Corners of Radiator Grill (Facing down side stairway / ladder)
1x Inner Side of Operator's Cabin (Facing access)
2x Engine Compartment Area (Behind radiator)
1x Front Corner of Operators' Cabin (Facing down main stairway)

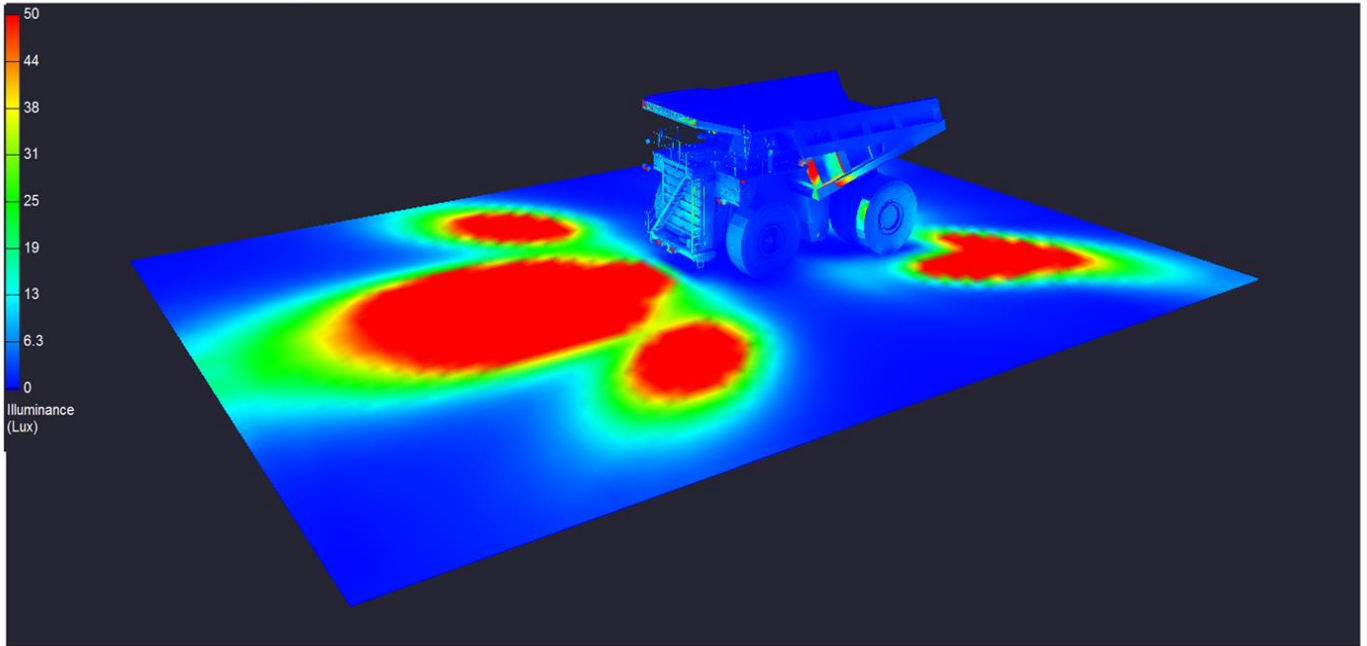
Merlin Equipment Pte Ltd
40 Tech Park Crescent, Singapore 638097
Tel: +65 6863 1753 Fax: +65 6863 1757
Email: sales@merlinequip.com

Pseudo Color Top Down

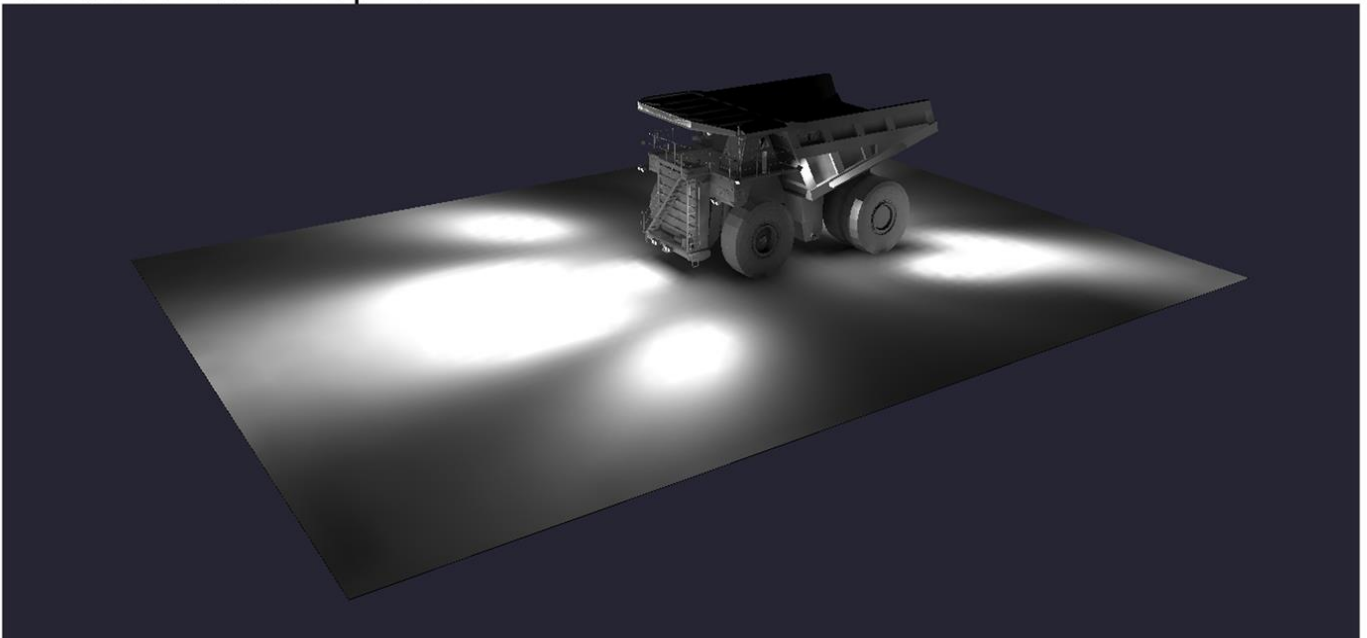


Merlin Equipment Pte Ltd
40 Tech Park Crescent, Singapore 638097
Tel: +65 6863 1753 Fax: +65 6863 1757
Email: sales@merlinequip.com

Pseudo Color Top Down



Simulation Color Top Down



Merlin Equipment Pte Ltd
40 Tech Park Crescent, Singapore 638097
Tel: +65 6863 1753 Fax: +65 6863 1757
Email: sales@merlinequip.com