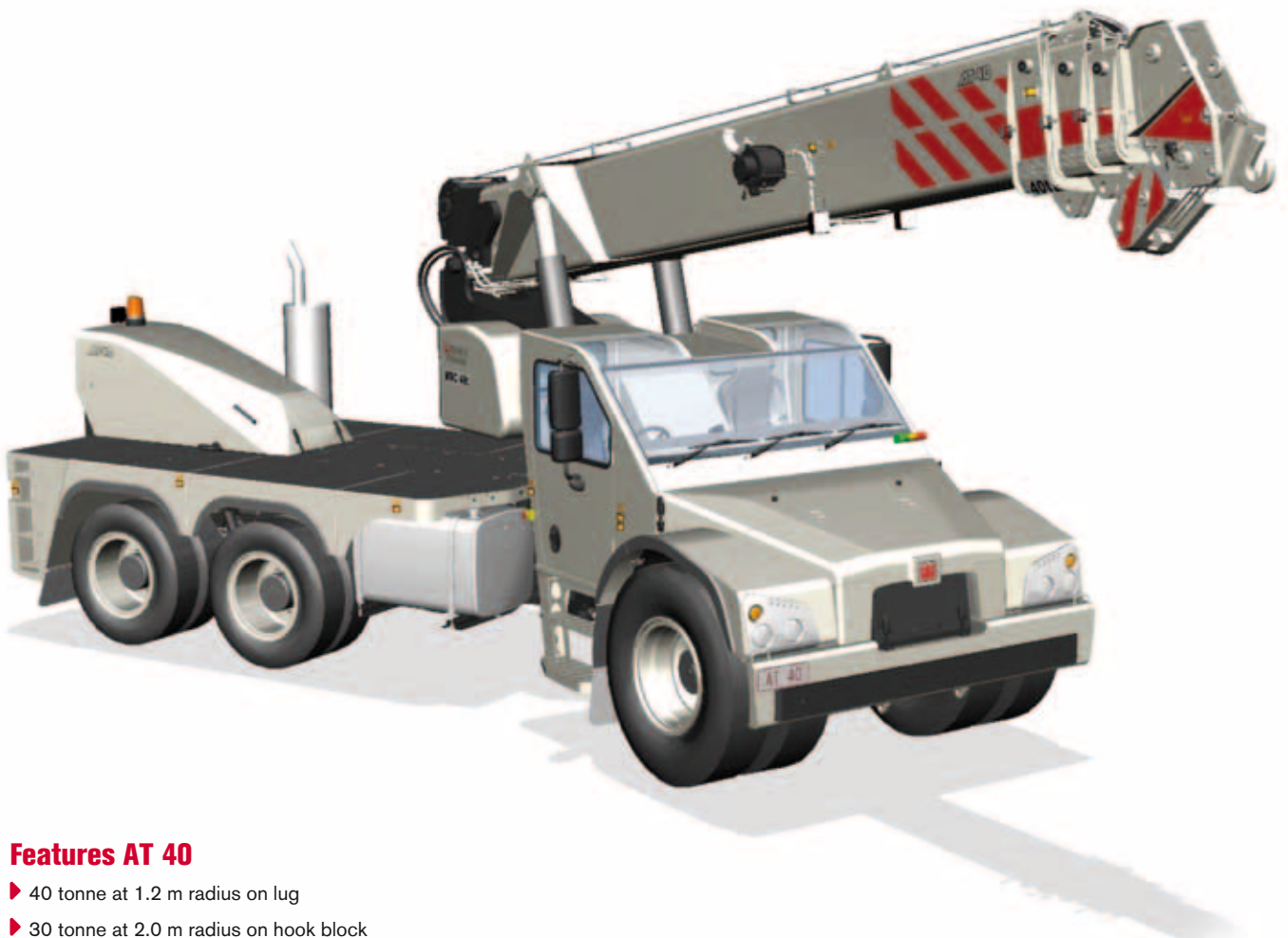


AT 40

PRELIMINARY



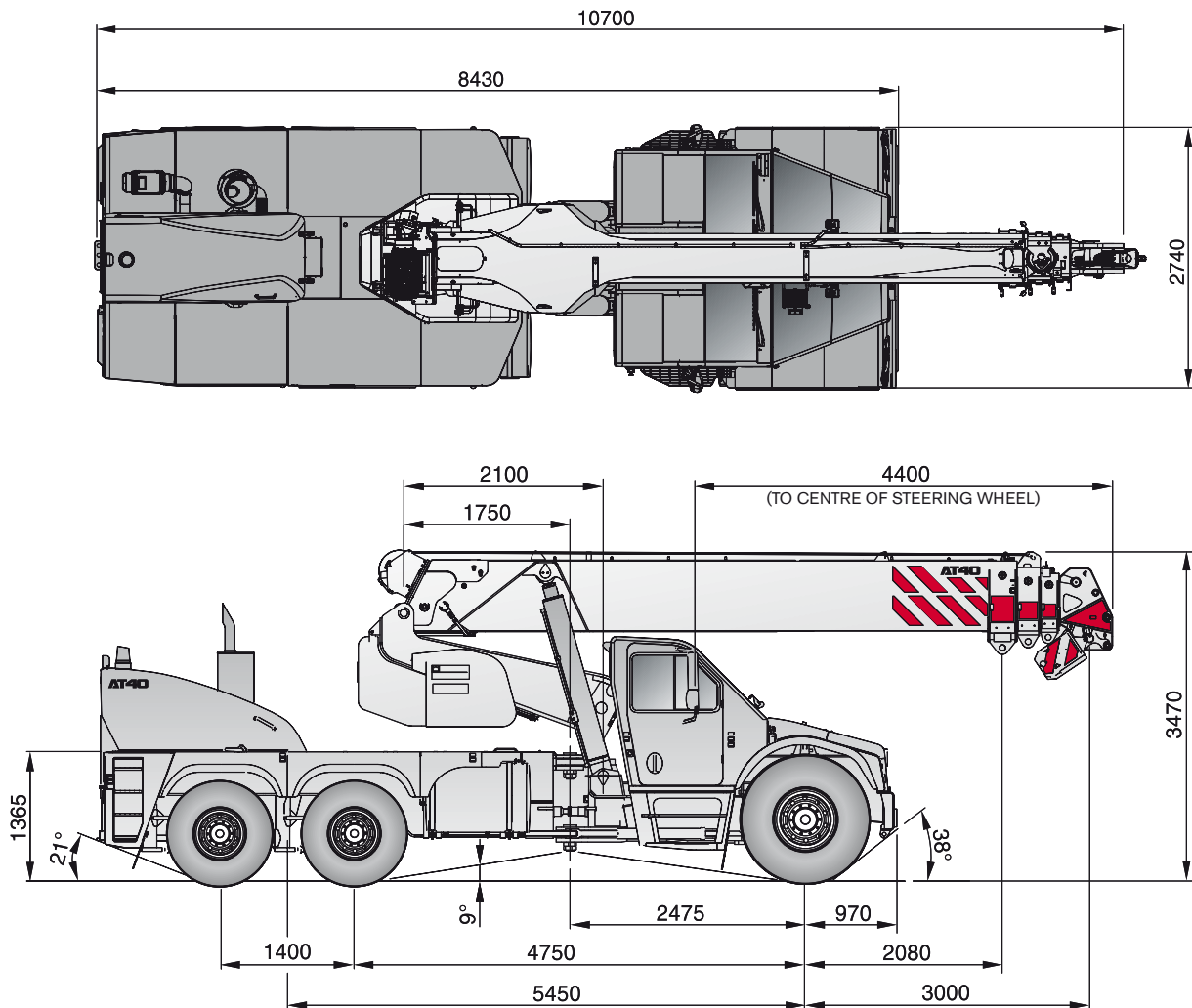
Features AT 40

- ▶ 40 tonne at 1.2 m radius on lug
- ▶ 30 tonne at 2.0 m radius on hook block
- ▶ 20 tonne on machinery (Rhino) hook
- ▶ 19 m maximum hook height
- ▶ Single line 4.4 tonne
- ▶ LMI: dynamic rated capacity calculation
- ▶ Designed to AS1418.5 (2013)

WORKS FOR YOU.™

DIMENSIONS

AT 40



Tyres

Front axle: 385/95R25
Axle 2 & Axle 3: 315/80R22.5

Standard Features

Automatic greasing system
Engine monitoring
Cruise control

Cabin

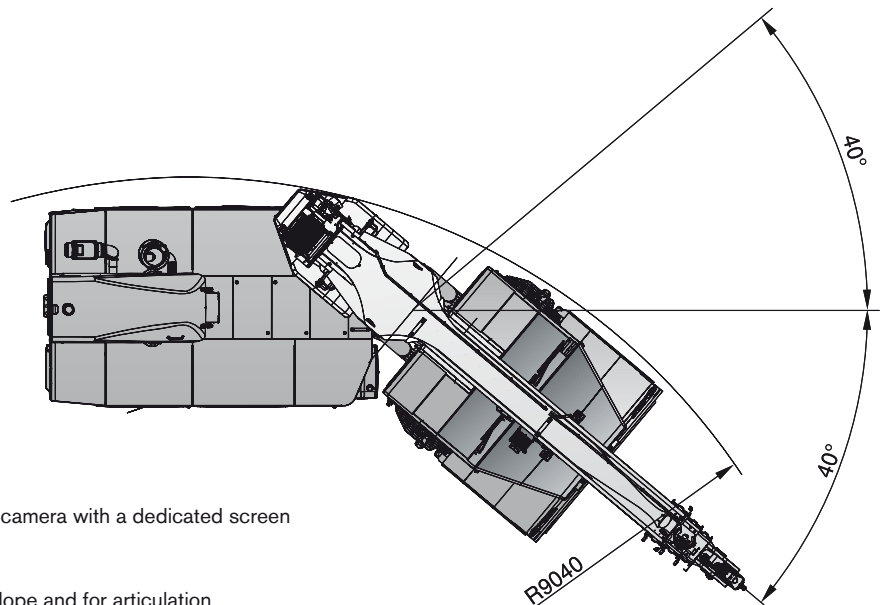
Full width isolated cabin
Ducted air conditioning and demister
GPS and MP3 player with Bluetooth
Reversing camera plus a separate rear view camera with a dedicated screen

LMI

MRC calculation: Dynamically de-rates for slope and for articulation
Service diagnostics & data logging integrated into the LMI

Suspension

Hydro-pneumatic suspension
Suspension modes: There are a number of button selectable optional suspension arrangements.
Some examples are:
– High Clearance mode; suspension fully extended, increasing the rear clearance by 110 mm.
– Two axle: During crane mode axle 3 can be raised to reduce turning circle and eliminate tyre drag.



RADIUS CHART

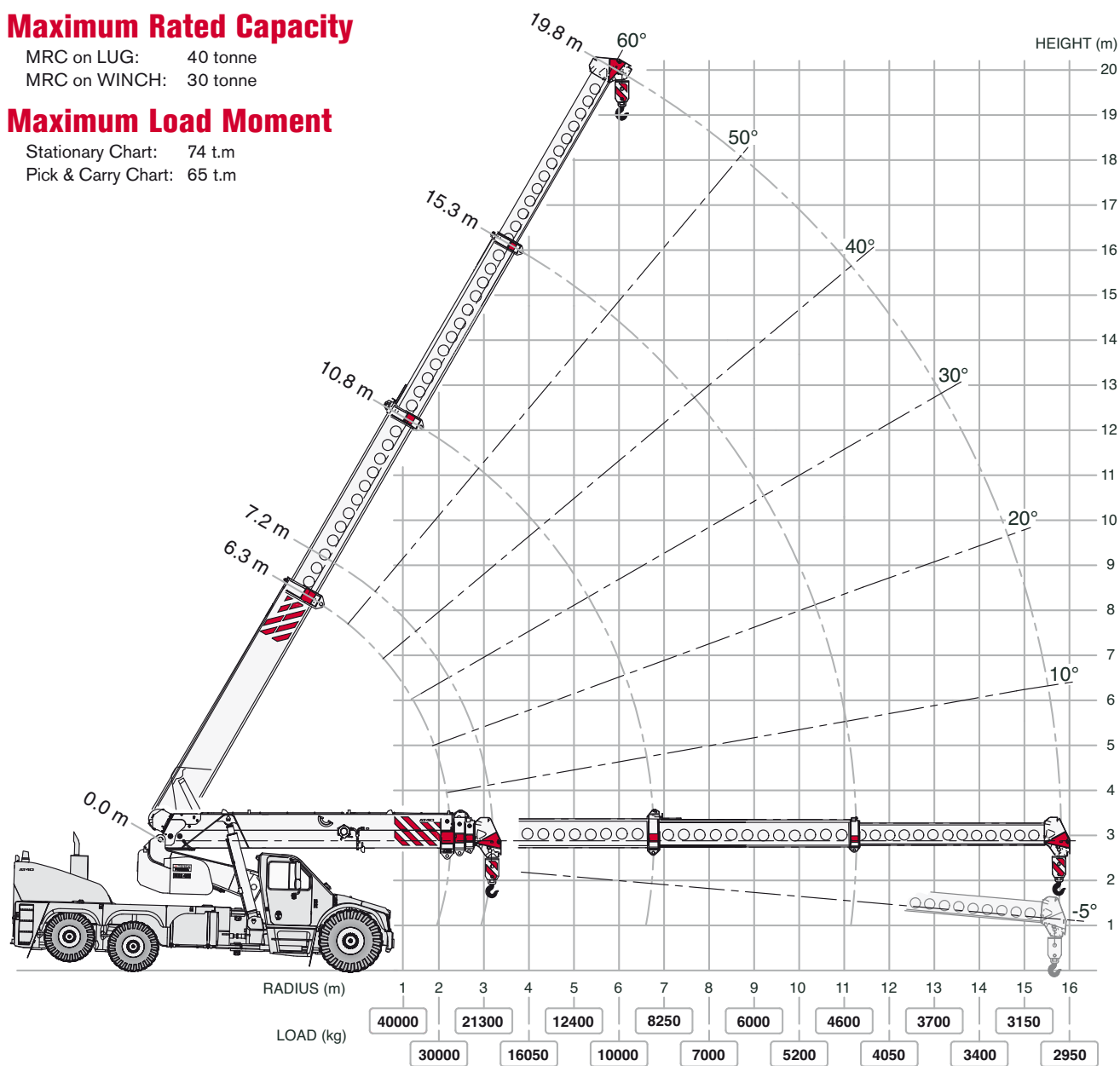
AT 40

Maximum Rated Capacity

MRC on LUG: 40 tonne
MRC on WINCH: 30 tonne

Maximum Load Moment

Stationary Chart: 74 t.m
Pick & Carry Chart: 65 t.m



NOTE: Rated Capacity values shown are for the Pick and Carry Chart.
The Stationary Chart will give higher rated capacities.



TECHNICAL DESCRIPTION

AT 40

Boom

Four section boom (all extension sections powered): Maximum boom length		19.8 m
Maximum hook height		19.0 m
Articulation		40° R / 40° L
Fixed lug	Maximum load	40 tonne
Machinery hook (Rhino)	Maximum load	20 tonne

Winch

Fully compensated hook block when telescoping sections 1 & 2		
Maximum line pull		4.4 tonne
Two speed winch		
Hook block (7 part)	Maximum rated capacity	30 tonne

Engine and Transmission

Standard Engine	Mercedes OM 906	EUROMOT 3A (US Tier 3) compliant
Optional Engine	Mercedes OM 936	EUROMOT 4 (US Tier 4F) compliant
Engine Power	(OM 906)	205 kW
Engine Torque	(OM 906)	1100 Nm
Transmission	Allison	6 speed
Transfer case	ZF	2:1 ratio

Hydraulic System

Load sensing, power limited axial piston pump	95 cc/rev
Maximum Flow rate	210 l/min
Maximum Working pressure	350 bar
Hydraulic tank capacity	470 litre

Chassis

Front axle	Kessler (drive axle – 2WD/4WD)	11.5 tonne
Axle 2	Kessler (drive axle – 4WD only)	9 tonne
Axle 3	Kessler (non-drive)	9 tonne
On Highway	Rear axles act as tandem – Turning Circle	9.0 m
Crane Mode	With axle 3 raised – Turning Circle	8.2 m
Brakes	Air operated disc brakes – all axles	
Suspension	Hydro-pneumatic suspension – LMI controlled functionality	

On Highway

Maximum speed	75 kph
Fuel capacity	470 litre

This document is a preliminary product flyer based on the as built dimensions and components of the prototype AT 40. Terex reserves the right to make enhancements and improvements pre-production. Patent Pending.

Effective Date: September 2016. Product specifications and prices are subject to change without notice or obligation. The photographs and/or drawings in this document are for illustrative purposes only. Refer to the appropriate Operator's Manual for instructions on the proper use of this equipment. Failure to follow the appropriate Operator's Manual when using our equipment or to otherwise act irresponsibly may result in serious injury or death. The only warranty applicable to our equipment is the standard written warranty applicable to the particular product and sale and Terex makes no other warranty, express or implied. Products and services listed may be trademarks, service marks or trade-names of Terex Corporation and/or its subsidiaries in the USA and other countries. All rights are reserved. Terex® is a registered trademark of Terex Corporation in the USA and many other countries. Copyright 2016 Terex Corporation.

TEREX Australia Pty Ltd

585 Curtin Avenue East, Eagle Farm, QLD Aust 4009

Tel.: +61 7 3868 9600

www.terex.com/cranes

